

Sources: Esri, HERE, Garmin, Intermap, increment P Corp., GEBCO, USGS, FAO, NPS, NRCAN, GeoBase, IGN, Kadaster NL, Ordnance Survey, Esri Japan, METI, Esri China (Hong Kong), (c) OpenStreetMap contributors, and the GIS User Community

Zoogdieren

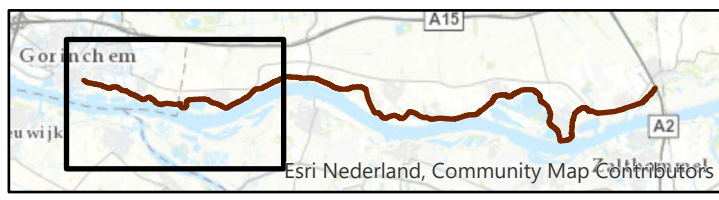
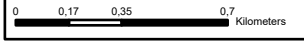
Soortenkaart

- Zoogdieren, Bevers (Castoridae)

Leefgebieden

- ▨ marters

Versie ontwerp: OPPWW v1.2
 Datum: 25-2-2020
 Schaal: 1:25.000





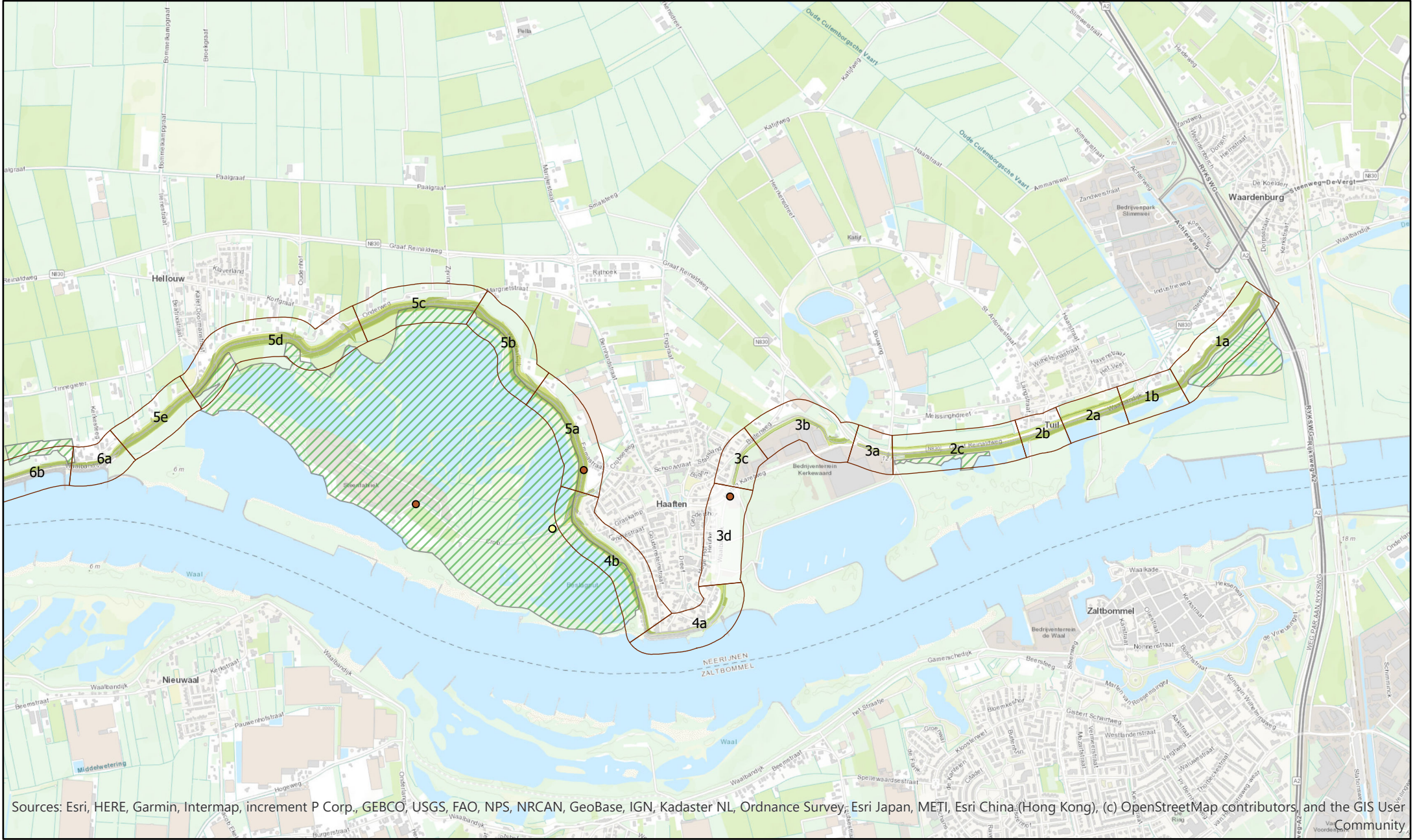
Zoogdieren

Versie ontwerp: OPPWW v1.2
 Datum: 25-2-2020
 Schaal: 1:25,000

0 0.17 0.35 0.7
 Kilometers

Leefgebieden
 marters

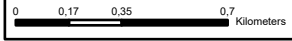




Sources: Esri, HERE, Garmin, Intermap, increment P Corp., GEBCO, USGS, FAO, NPS, NRCAN, GeoBase, IGN, Kadaster NL, Ordnance Survey, Esri Japan, METI, Esri China (Hong Kong), (c) OpenStreetMap contributors, and the GIS User Community

Zoogdieren

Versie ontwerp: OPPWW v1.2
 Datum: 25-2-2020
 Schaal: 1:25.000



Soortenkaart

- Zoogdieren, Bevers (Castoridae)
- Zoogdieren, Egels (Erinaceidae)
- Zoogdieren, Hazen (Leporidae)

Leefgebieden

- marters



Esri Nederland, Community Map Contributors

